



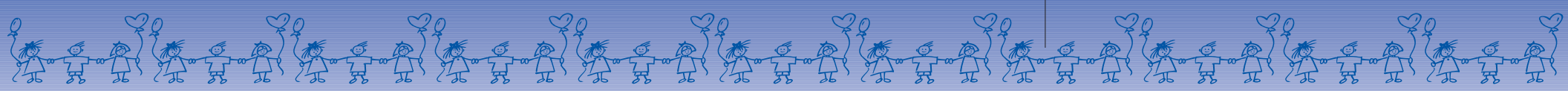
SPEECH AND LANGUAGE SERVICES



STUDENT SERVICES DEPARTMENT



*Peterborough Victoria
Northumberland and Clarington
Catholic District School Board*



The Peterborough Victoria Northumberland and Clarington Catholic District School Board recognizes the individual needs of each student. The Board's Christian philosophy supports Integration and the belief that all students belong together. The emphasis is on meeting the individual needs of each student with a minimum of segregation and isolation.

The Speech and Language Services Department was new to the Peterborough Victoria Northumberland and Clarington Catholic District School Board in April 1999.

OUR STAFF INCLUDES:

- three Speech-Language Pathologists (S.L.P.)
- one Communicative Disorders Assistant (C.D.A.)

THE ROLE OF THE SPEECH-LANGUAGE PATHOLOGIST IS:

- ✓ to identify and evaluate students with speech, language, and augmentative and alternative communication needs
- ✓ to plan and implement individualized treatment programs
- ✓ to collaborate with parents, caregivers, teachers, and other professionals to meet the individual needs of students
- ✓ to monitor and document the effectiveness of treatment and student progress
- ✓ to write reports and other required documents
- ✓ to educate parents, teachers and administrators about communication development and disorders
- ✓ to supervise and work with the C.D.A.
- ✓ to serve on related committees and boards to liaise with community agencies

THE ROLE OF THE COMMUNICATIVE DISORDERS ASSISTANT IS:

- ✓ to plan, implement and support programs developed with the S.L.P.
- ✓ to provide written progress notes of intervention sessions
- ✓ to assist in the preparation and purchasing of appropriate materials

Eligibility

Students from Grade 1 to graduation attending the Peterborough Victoria Northumberland and Clarington Catholic District School Board are eligible to receive services.

Referrals

The referral process can be initiated by parents/guardians or School Staff. Referrals are to be made by the school's Special Education Resource Teachers (S.E.R.T.s) following consultation with parents and School Resource Team (S.R.T.) meetings. Referrals are forwarded to the Speech-Language Pathologist at the Education Centre.

Service Delivery

The School Board's Speech-Language Pathologists are mandated by the Ministry of Education to provide services primarily to those children with language disorders and augmentative and alternative communication needs in the school setting.

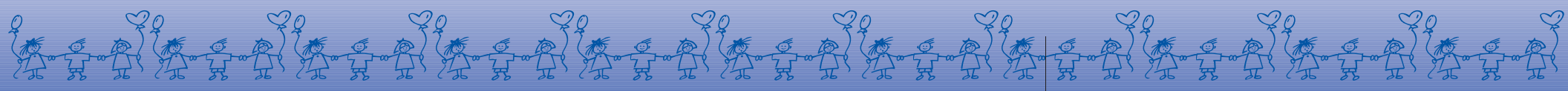
What is a Language Impairment / Disorder?

A student with a language impairment will be working well below age level in one or more of the following areas: listening, speaking, reading, writing, or social language.

If these students are non verbal they will require assistance to integrate augmentative and alternate communication solutions specific to functional activities that occur at school.

Signs of a Language Difficulty

- trouble understanding jokes, puns, riddles, and idioms
- difficulty understanding stories/following directions
- difficulty organizing and sequencing information
- difficulty following group discussions
- poor problem-solving and inferencing skills
- limited vocabulary
- coinciding voice, articulation, or stuttering difficulties
- errors in grammar while speaking
- difficulty turn-taking during conversation
- difficulty sounding out words
- reads without comprehension
- difficulty initiating or organizing written work



PreSchool Agencies

FIVE COUNTIES CHILDREN'S CENTRE

872 Dutton Road, Peterborough, Ontario K9H 7G1
(705) 748-2221 • Voice Mail (705) 748-2337
Fax (705) 748-3526 • Toll Free 1-888-779-9916

Serving children from 0-6 years in the following areas: Cobourg, Campbellford, Haliburton, Lindsay and Peterborough. Parents may request referral.

GRANDVIEW CHILDREN'S CENTRE

600 Townline Road S., Oshawa, Ontario L1H 7K6
(905) 728-1673 • Fax (905) 728-2961
Toll Free in 905 Area Code 1-800-304-6180

Serving children from 0-5 years in the following areas: Ajax, Oshawa and Port Perry. Referrals MUST be signed by a physician.

DISTRICT PRESCHOOL SPEECH & LANGUAGE PHONE LINE

866-888-8KPR, Ext. 4577
Peterborough (705) 743-1000

Serving children from birth to their 5th birthday in Haliburton, Northumberland, Peterborough and Victoria counties. www.kidtalk.on.ca

NORTHUMBERLAND CHILD DEVELOPMENT CENTRE

38 Walton Street, 3rd Floor
Port Hope, Ontario L1A 1N2
(905) 885-8137 • Fax (905) 885-4819

Serving preschool age children up until full-time school attendance in Northumberland county. Parents may request referral.

For more information call:

STUDENT SERVICES DEPARTMENT

(705) 748-4861

Speech-Language Pathologist: Ext. 284

Voice Mail: (705) 742-1491

Fax: (705) 748-5187

Toll Free in Board Area: 1-800-461-8009

Peter L. Roach Catholic Education Centre

1355 Lansdowne Street West
Peterborough, Ontario
K9J 7M3



DESIGNED AND PRODUCED BY THE COMMUNICATIONS DEPARTMENT
2003



Peterborough Victoria
Northumberland and Clarington
Catholic District School Board